



13 84 Elmbourne Road
SW17 8JH

Consuelo Celluzzi

A magical and whimsical range of art, crafts and cards inspired by nature.

@consueloartist
07790 968 257

5-6 Oct 12-13 Oct



14 46 Drakefield Road
SW17 8RP

Emma Gibson Portia Gibson

Mother and daughter duo. Emma is a jeweller working in silver and brass and Portia is a tailor, clothes maker and dyer.

@emmagibsonjewellery
@portiaroseclothes

12-13 Oct



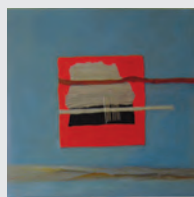
15 16A Stapleton Road
SW17 8AU

Joyce Akrafi

Inspired by 50s and 60s African fashion nostalgia, this zero waste design boutique produces unique hair and clothing accessories that are quirky & stylish.

www.akrasiboutique.com
@akrasiboutique
07961035284

5-6 Oct 12-13 Oct



16 61 Ansell Road
SW17 7LT

Cynthia Wild

Cynthia's paintings, drawings, collages and mixed media explore a variety of ideas about nature and culture.

07758 209 868

5-6 Oct 12-13 Oct



17 Studio 28, Wimbledon Art
Studios, SW17 0BB

Alma Tipon

Aerial view seascapes. Her art reflects her passion and deep-rooted affinity for the sea. Her work brings the beauty and tranquility of the ocean to life.

@almatiponart
07447 937 007

12-13 Oct



18 Studio 606, Wimbledon Art
Studios, SW17 0BB

Fabi Plat

Fabi Plat shares her vision of a way to connect with the world and to bring nature inside the house. Celebrating the beauty and wonder of nature.

www.fabiplat.com
@fabi_plat
07870 208 913

5-6 Oct 12-13 Oct



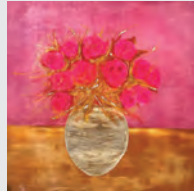
19 RED Studio 263, Wimbledon
Art Studios, SW17 0BB

Ishbel Fleming-Boyd

Ishbel is a botanical and abstract artist working in mixed media and digital mediums. Delicate, beautiful and intricate works inspired by the plant world and nature.

www.ishbelflemingboydart.com
@ishbelflemingboyd.artist
07968 763 007

5-6 Oct 12-13 Oct



20 Green studios 101, Wimbledon
Art Studios, SW17 0BB

Kat Vestgard

A dazzling blend of neon flowers with metallic effects, capturing the electric beauty of nature. Yellow studios entrance, up stairs and take a right on the first floor.

@katvestgard
07808 048 148

5-6 Oct 12-13 Oct



21 Yellow Studio 11, Wimbledon
Art Studios, SW17 0BB

Alejandro Escobar

Alejandro is a fine art and digital artist exhibiting a wide variety of landscape and still life 3D paintings among other surprises. All welcome.

www.alejandroeescobar.com
@alejandroeescobar.artist
07596 476 478

5-6 Oct 12-13 Oct

Visit www.artistsopenhouse.co.uk for interactive maps of Putney, Southfields, Battersea, Wandsworth, Balham, Tooting and Furzedown. Also further information on the artists.



Sat 5 - Sun 6 and
Sat 12 - Sun 13 October
11am - 6pm

TOOTING and FURZEDOWN



1 17 Brookview Road
SW16 6UA

Margo Random Jane Richards

Margo's paintings and collages show an abstract sensibility and love of colour. Jane's ceramics are made on the wheel with texture and colourful glazes.

@margo_random_art
07736 068 594/07941 149 617

5-6 Oct 12-13 Oct



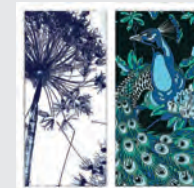
2 49 Parklands Road
SW16 6TB

Karen Hall Bubble Writer

Super-cool typography and hand-drawn illustrations from the Bubble Writer and blooming joyful art and ikebana floral creations from LoveLifePlant.

@lovelifeplant
@LindaScott

5-6 Oct



3 The Furzedown Project
93 Moyser Road, SW16 6SJ

Maria Storey Steven Gappy Ronnie Hackston Neil Johnson

Four local artists showing paintings, drawings, prints, cards and printed textiles. With a wide variety of approach and technique including paintings on canvas, ink drawings, lino prints, etchings, tea towels and digital prints, most works are inspired by the themes of nature, landscape and wildlife.

@mariastoreyprints
07799 298 208
@stevegappy
@hackstonr
@neil.johnson.9212301

12-13 Oct



4 84 Ribblesdale Road
SW16 6SE

Chris Lessware

Chris paints big, bold, colourful abstract paintings, highly textured and layered. Mostly big, but a range with something to fit your wall space.

https://chrislessware.co.uk
@chrislessware
020 8769 0520

5-6 Oct 12-13 Oct



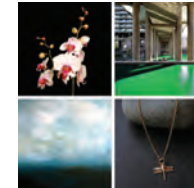
5 74 Moyser Road
SW16 6SQ

Sprout Community Arts

Our artist members' exhibition includes a selection of work by our super-talented local artists. Open every day 1 to 13 October, 11am to 5pm and weekends 11am to 6pm.

www.sproutarts.com
@sprout_arts_london

5-6 Oct 12-13 Oct



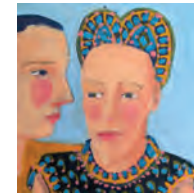
6 112 Nimrod Road
SW16 6TQ

Furzedown Art Studio Milly & Max Jewellery

Photography, semi-abstract paintings, illustrations, stationery, cards and gifts with jewellery and accessories by Milly & Max.

@furzedownartstudio_photography
@MillyandMax1

5-6 Oct 12-13 Oct



7 14 Spalding Road
SW17 9BW

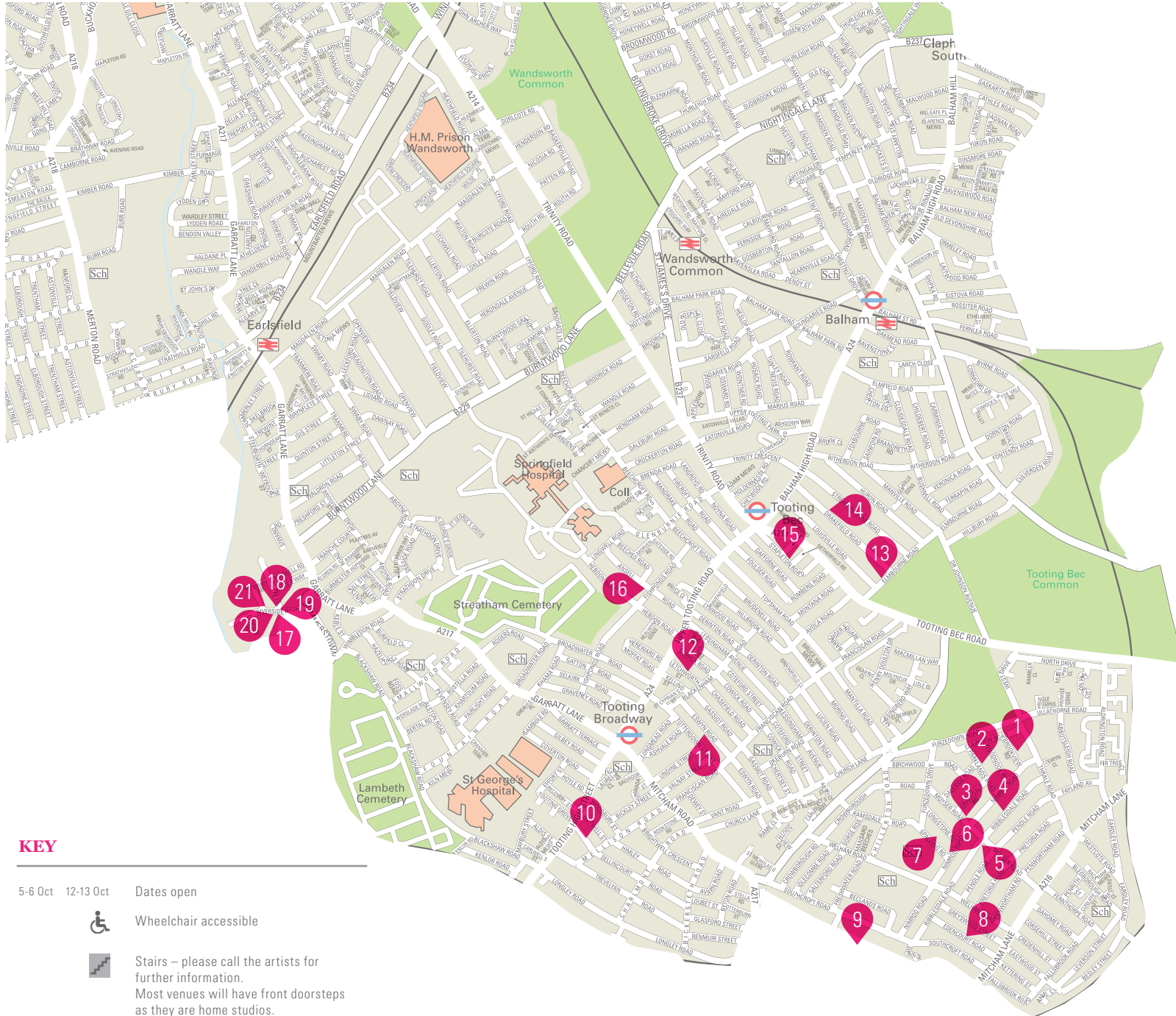
Lucinda Denning

Lucinda Denning welcomes you into her garden studio showing bold bright paintings, prints, cards, calendars, mugs, magnets, jigsaws and secret worlds.

www.lucinda-denning.com
@lucindadenningpaintings
07769 560 627

5-6 Oct 12-13 Oct


Tooting and Furzedown

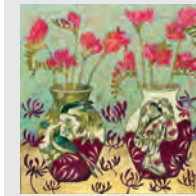


KEY

5-6 Oct 12-13 Oct Dates open

 Wheelchair accessible

 Stairs – please call the artists for further information. Most venues will have front doorsteps as they are home studios.



8 47 Edencourt Road
SW16 6QR

Emma Forrester

Vibrant still life paintings, prints and greetings cards. Mixed media work executed in a unique and colourful style.

www.emmaforrester-art.com
@emmaforresterartist
07771 784 824

12-13 Oct



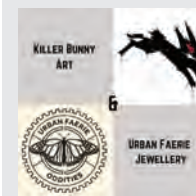
9 138 Seely Road
SW17 9QY

Amanda Blunden

A warm welcome to Amanda's home and studio where she will be showing a collection of semi-abstract paintings (of all sizes) as well as prints and cards.

www.amandablundenart.com
@amandablundenart

5-6 Oct 12-13 Oct



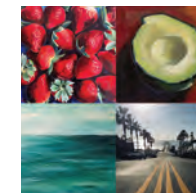
10 24 Sellincourt Road
SW17 9RY

Urban Faerie Killer Bunny

Handmade jewellery for the curiosity lovers plus fun and quirky illustrations.

https://linktr.ee/urbanfaerieoddlies
https://linktr.ee/killerbunny99

6 Oct 12-13 Oct



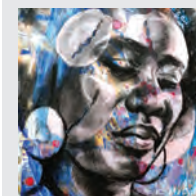
11 47 Eswyn Road
SW17 8TR

Rob Schofield Rupert Lazarus Ailie Donaldson

We are a group of three friends exhibiting together: Rob Schofield, painter. Rupert Lazarus, photographer. Ailie Donaldson, painter. Not to be missed!

07941 654 190

5-6 Oct 12-13 Oct



12 13 Letchworth Street
SW17 8SX

Ken McCalla

Ken uses bold and colourful imagery to celebrate his rich cultural heritage. His artwork explores personal growth and the search for harmony.

www.yahwarts.co.uk
@yahw_arts
020 8672 9492

5-6 Oct 12-13 Oct